



KNTD-1200

UC features for up to 1200 users

The KNTD-1200 IP PBX appliance is designed to bring leading edge voice, video, data, and ability features to enterprises, small and medium businesses, retail and residential environments in an easy-to-manage fashion. This enterprise-grade on premise IP PBX supports E1, SIP Trunk, RJ45 networks and offers scalability by supporting up to 1200 users. This secure and reliable IP PBX delivers unified communication features at an unprecedented price point without any licensing fees, costs-per-feature, or recurring fees. Host Standby N+1 redundancy System design.

KNTD-1200 server is a computer device that centrally processes and manages information, with multiple functions such as storing, processing, sharing, and protecting data. The KNTD-1200 server can be equipped with three major systems: telephone, broadcasting, and access control, and has efficient and stable performance to meet your various needs.



1200 users
Supports up to 1200 users,
120 SIP trunk accounts,
up to 600 concurrent calls.



Three-In-One
Optional,
Telephone system,
Broadcasting system,
Access control system.



Strongest-possible
security protection using
HTTP.



Supports IVR
(Interactive Voice Response).



Built-in call recording server
recording accessed
via web user interface.

SIP

Supports call queue
for efficient call
volume management.



Technical Parameter



Model	KNTD-1200 IP PBX Enterprise - class unified communication system
Hardware interface	
	Host Standby N+1 redundancy System design
Network Interface	RJ45 Gigabit interface (10/100 / 1000M Ethernet adaptive)
Reset switch	Support, Web configuration
Audio / video capability	
Speech algorithm	G.711, 7.29, 7.23,7.26 encoding
Voice	G.711 A-law/ U-law, G.723.1, G.726, G.729A
Video coding	H.264.
Signaling protocol	
DTMF detection method	Support RFC2833, SIP INFO
Digital signal	SIP2.0
Terminal management and automatic deployment capabilities	Support for SIP terminal plug -and-play auto-deployment (including DHCP / multicast SIP , support Remote upgrade,local upgrade)
Network protocol	TCP UDP IP, RTP DHCP,SSH,HTTP,SIP
Safety	
Advanced defense	Alert events, whitelists, blacklists
Physical characteristics	
Global universal power supply	Input: 100~ ~ 240VAC, 50 / 60Hz;
weight	Equipment weight: 3.5 Kg; Package weight: 4,4Kg
Use the environment	Operating environment:32 -113° F/0~ 45° C, humidity 10 - 90% (No condensation) Storage environment: 14-140°F / - 10 ~ 60° C, humidity 10 - 90% (No condensation)
Size	430mm (L) X 246.7mm (W) X 44.3mm (H) IU standard
Installation	Desktop or cabinet installation

Additional features

Multi language support	Web user interface supports English / Simplified Chinese, customizable IVR / voice prompts in English, Chinese
Caller ID	ETSI-DTMF
Call Center	Supports call queues.
Customize Auto	Supports IVR (Interactive Voice Response)
Concurrent call	Up to 5,000 SIP terminals can be registered, up to 500 concurrent calls
members	Calls waiting, Call transfer, Ringing group, Subgroup, meeting, broadcast, blacklist, call / intercom, etc

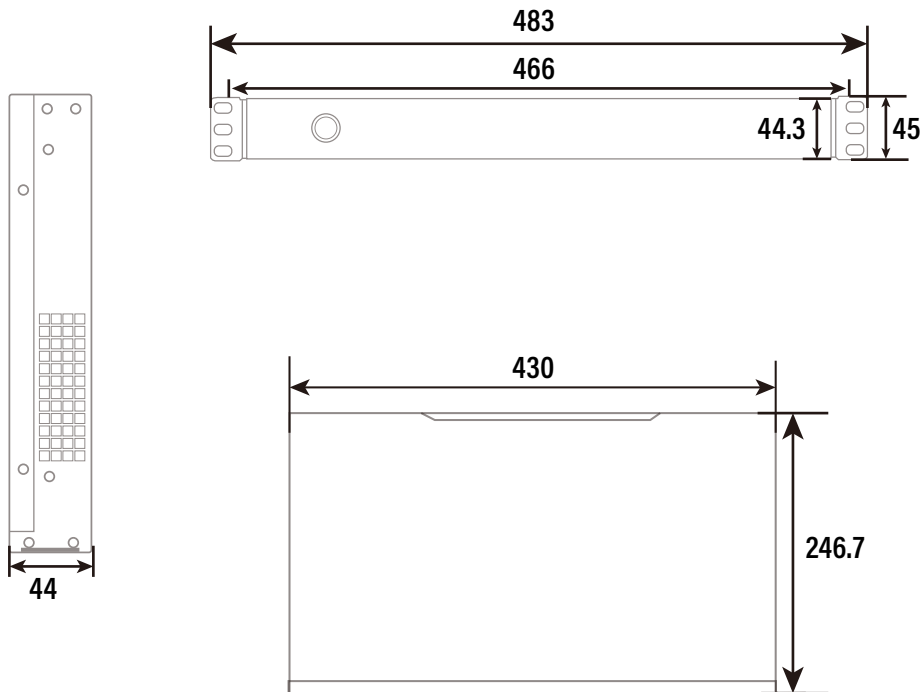
KNTECHIP PABX MODEL NUMBER

REGISTER USER	SIMULTANEOUS CALLS	MODEL NUMBER
50 line	15 line	KNTD-50
100 line	30 line	KNTD-100
300 line	90 line	KNTD-300
500 line	150 line	KNTD-500
800 line	400 line	KNTD-800
1000 line	300 line	KNTD-01K
3000 line	900 line	KNTD-03K
5000 line	1500 line	KNTD-05K



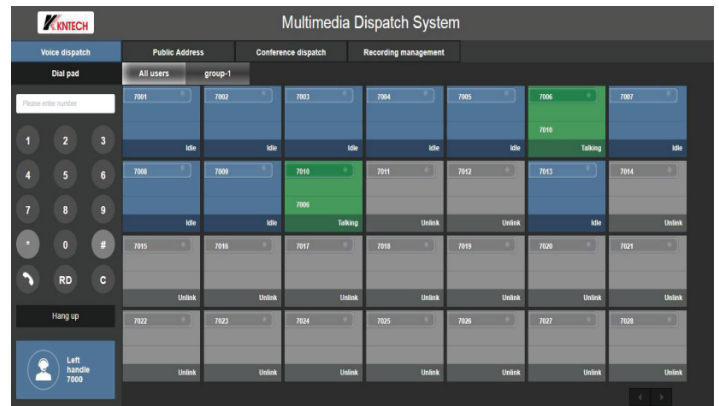
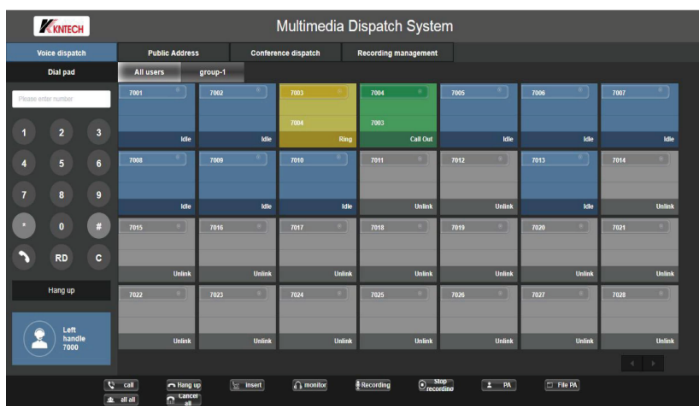
Size display :

Unit: mm

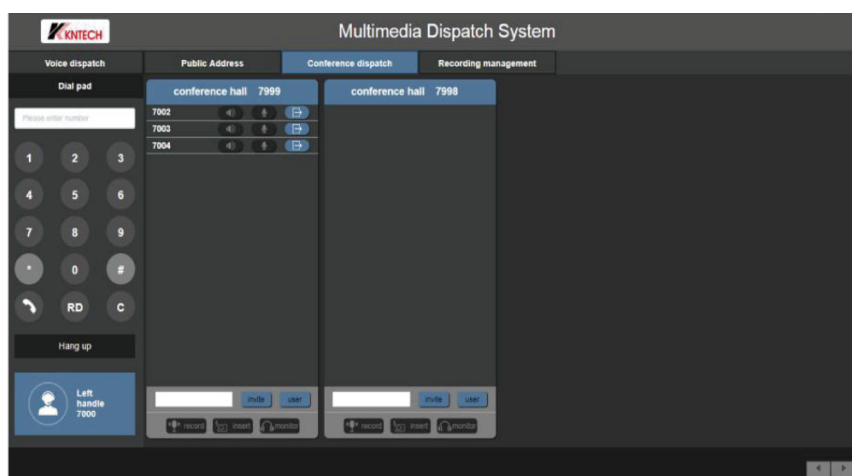


Voice dispatch-Telephone call

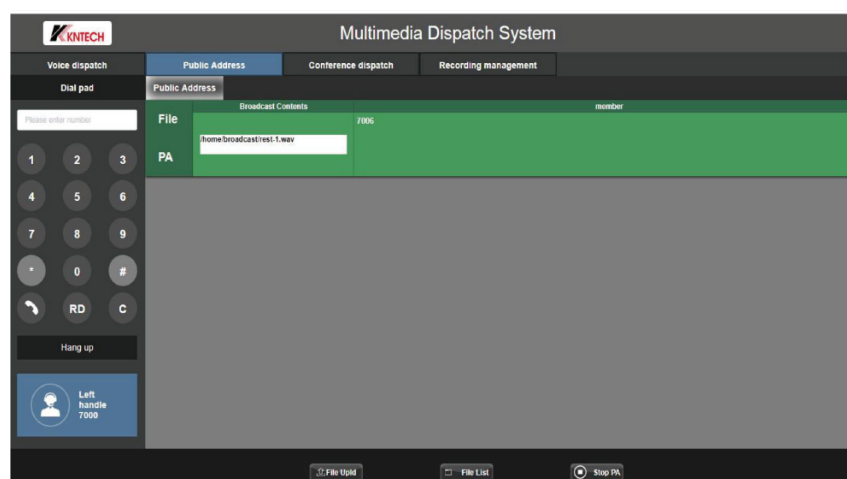
Blue color means on line , green color means ringing, yellow color means busy.



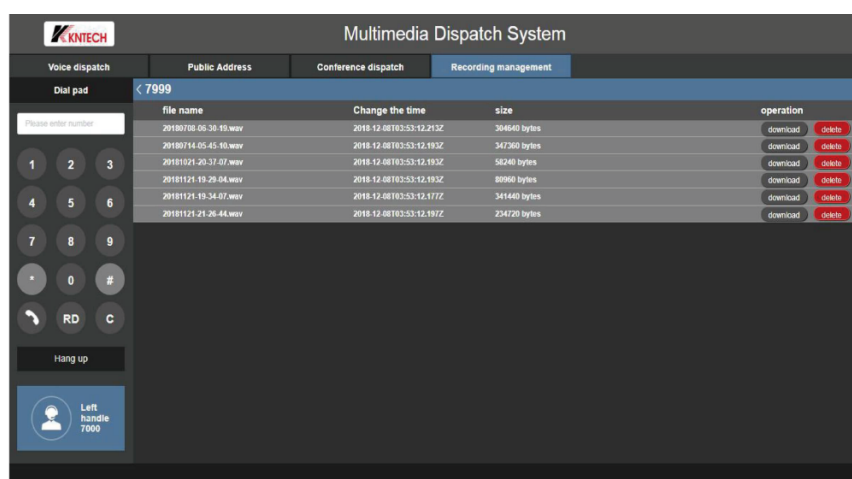
Conference dispatch-Meeting room



Public Address



Configuration Manual



Emergency telephone system

